

# W O M E N O F I N F L U E N C E : ATTORNEYS

**W**ELCOME TO THE FIRST ANNUAL EDITION OF THE SAN FERNANDO VALLEY BUSINESS JOURNAL'S SPECIAL supplement honoring the Valley region's most influential women in the legal profession.

There are some particularly stellar attorneys in the Valley who happen to be women and we've alphabetically listed some of the very best of them here, along with details about their careers, practices and relevant recent successes they've achieved.

The women covered in these pages have been recognized for exceptional legal skill and achievement across the full spectrum of responsibility, exemplary leadership as evidenced by the highest professional and ethical standards, and for contributions to the Los Angeles community at large.

Congratulations to the extraordinary women included this year and thank you for your contributions to the people and businesses of our region.

*Methodology: The professionals featured in these pages did not pay to be included. Their profiles were drawn from nomination materials submitted to the San Fernando Valley Business Journal. Those selected for inclusion were reviewed by the editorial department and chosen based on a demonstration of impact made on the profession and on the San Fernando Valley community.*



**JESSICA BAGDANOV**

Partner  
BG Law

Jessica Bagdanov, partner at BG Law, is an attorney with significant and comprehensive insolvency and restructuring experience. She consistently represents chapter 7 trustees and receivers, as well as both debtors and creditors in chapter 11 matters. Bagdanov also has significant business litigation experience, and is routinely responsible for a wide range of motion practice in contested matters, adversary proceedings, and related appeals.

Bagdanov is a highly respected member of the insolvency community and has a well-earned reputation as a leading bankruptcy litigator. In one such case, she represented the producer of the full-length feature film "Hotel Mumbai" in the bankruptcy case of The Weinstein Company Holdings, LLC et al., and recovered marketing and licensing rights from the bankruptcy estate, allowing for domestic release of the film. Jessica has spent her entire professional career at BG Law.

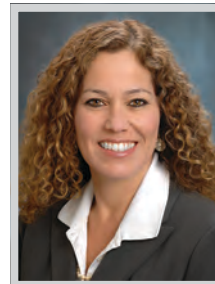


**CHANDRA BEATON**

Litigation Chair  
LightGabler

Chandra A. Beaton is one of the top employment litigation attorneys in the tri-counties. As the chair of the litigation practice at LightGabler, she oversees 11 litigation attorneys and four paralegals, and their cases on behalf of employers and managers in employment-related disputes. In the past few years under her guidance, the firm has successfully represented over 100 local clients in employment matters.

Beaton has extensive civil litigation experience in both state and federal courts. Her litigation background encompasses a broad range of disputes, including construction defect and mold claims, personal injury defense, general and professional liability defense, intellectual property litigation, real estate litigation, business litigation, and homeowner's association matters. In 2003, she was admitted to the State Bar of California. She is also admitted to the United States District Court for the Central, Eastern and Southern Districts of California.



**SUE BENDAVID**

Chair, Employment Practice Group  
Lewitt Hackman

Sue M. Bendavid is a California employment defense attorney. She is a shareholder and the chair of Lewitt Hackman's Employment Practice Group. Working exclusively with employers and management, Bendavid handles individual and class action litigation, arbitrations, mediations, claims prevention, and management training.

Apart from victories in the trial and appellate courts, Bendavid obtains dismissals and favorable rulings from the Equal Employment Opportunity Commission, the Department of Fair Employment and Housing, the Employment Development Department, the Labor Commissioner and the Department of Labor – saving clients millions by quashing litigation. Adept in pre-litigation counseling, advocacy, depositions, discovery and motion practice, Bendavid can often show why employees should withdraw claims, or convince agencies to dismiss claims in early stages. This results in large cost savings for the companies she represents. Bendavid has substantial experience with trials and class actions, writs, appeals, hearings and motion practice.



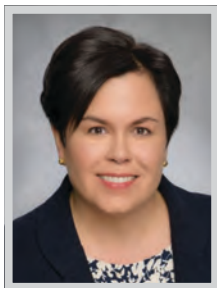
**KAREN M. BRAY**

Managing Partner  
Horvitz & Levy LLP

Clients and trial counsel often leverage Karen Bray's proficiency in identifying and preserving issues for potential appellate review. In that capacity, she has assisted trial counsel in a vast array of cases with summary judgment motions, motions in limine, jury instructions, trial briefs, verdict forms, and post-trial motions. She has also represented clients embroiled in complex appeals involving a variety of torts, Proposition 213's bar against recovery of non-economic damages by uninsured motorists, discovery sanctions, Proposition 51 and fault apportionment, punitive damages, breach of contract, insurance coverage and bad faith, default judgments, premises liability, and evolving law concerning the evidence admissible and the amount recoverable for medical expense damages.

Clients also rely on Bray to provide candid assessments concerning the likelihood of securing relief on appeal, allowing them to realistically evaluate when settlement will be in their best interests.

WOMEN OF INFLUENCE: ATTORNEYS



**KATHRYN (KAMIL) CANALE**  
*Partner*  
 Bradley Gmelich + Wellerstein LLP

**K**athryn (Kamil) Canale is an AV Preeminent peer-rated attorney with a broad background of experience upon which to draw. She provides advice and counsel and litigates employment cases. She is known for her creative solutions to legal problems and for being an aggressive litigator for her utilization of procedural and substantive motions to resolve litigation in her clients' favor. She specializes in handling complex liability and damages issues and cases with exposure in excess of a million dollars.

Canale has won numerous jury trials on behalf of her clients. Notably, she was lead trial counsel in a jury trial on behalf of a large cosmetics manufacturer in a products liability case where it was alleged the product contained asbestos. The plaintiff claimed the product caused her cancer and demanded over \$30 million. After a several month jury trial, the jury found in favor of Canale's manufacturing client.



**JOSEPHINE CHANG**  
*Partner*  
 Lewis Roca

**J**osephine Chang is a partner in Lewis Roca's Intellectual Property Practice Group. Clients turn to Chang for managing small and large patent portfolios, to conduct in-depth evaluations of products and processes for patentability and infringement, conduct right to use evaluations, and obtain advice for other IP matters in the U.S. and internationally. She has extensive international experience with patent filings across Europe and Asia, including Korea, Japan, China, Australia, and Canada.

As a member of the firm's Korea Practice Team, Chang has provided IP services to Korean clients in both the U.S. and internationally. Chang has also represented other international clients, including clients in Japan and Europe. She is experienced in managing large patent portfolios as well as working with startup companies and individual inventors. She also represents universities in their patent matters. In addition to U.S.-based and global patent prosecution, Chang counsels clients regarding trademarks and copyrights.



**EMILY V. CUATTO**  
*Partner*  
 Horvitz & Levy LLP

**E**mily Cuatto is a certified appellate specialist who has appeared as lead appellate counsel on behalf of numerous clients, including automobile manufacturers, healthcare entities and large insurers in the California, Oregon, and Nevada Supreme Courts, the U.S. Court of Appeals for the Ninth Circuit, and the California Court of Appeal. In addition to her work briefing and arguing appeals, she frequently partners with trial teams to develop legal strategies and preserve appellate issues during trial. She has served as appellate and trial counsel in a wide range of civil practice areas, including insurance coverage, business torts, catastrophic personal injury, and products liability.

Cuatto serves on the California Lawyers' Association Business Law Section Insurance Law Committee. She is also a co-instructor of the UCLA School of Law Ninth Circuit Appellate Advocacy Prisoners' Rights Clinic, and coordinates the firm's pro bono efforts.



**STEPHANIE FORMAN**  
*Managing Partner*  
 Tharpe & Howell, LLP

**S**tephanie Forman is managing partner of Tharpe & Howell, LLP and oversees the firm's daily business operations from its Sherman Oaks office. Forman is AV Preeminent Rated, having achieved the highest rating available to attorneys nationwide. Her practice focuses on all phases of civil litigation in both Federal and State courts, including arbitration, mediation and trial. She represents a broad range of clients, primarily in the areas of employment and labor law, premises liability, product liability, wrongful death and mass tort litigation; and has extensive experience counseling companies on administrative and regulatory compliance issues, including environmental and diverse risk assessment matters.

Forman is also a member of the Defense Research Institute and the Claims and Litigation Management Alliance which is comprised of insurance companies, corporations, corporate counsel, litigation and risk managers, claims professionals and attorneys who promote and further the highest standards of litigation management.

Employment law. It's sticky.  
 Don't get trapped.

Innovative | Experienced | Responsive

**LightGabler**  
 We Make Business Work®



LightGabler congratulates Karen and Chandra on being two of this year's "Women of Influence: Attorneys" nominees.



Karen L. Gabler



Chandra A. Beaton

**EMPLOYMENT COUNSEL & LITIGATION | INTELLECTUAL PROPERTY**  
 info@lightgablerlaw.com | LightGablerLaw.com | 805.248.7208

## WOMEN OF INFLUENCE: ATTORNEYS

**KAREN GABLER**

Attorney  
LightGabler

With almost 30 years of experience counseling businesses in all aspects of employment law, Karen L. Gabler has earned the reputation for developing proactive strategies to enhance workplace productivity and avoid employment disputes.

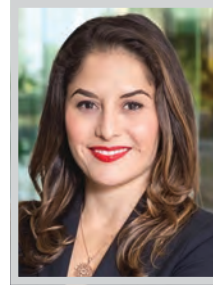
Gabler co-founded LightGabler in Camarillo in 2011. She was instrumental in the law firm's unprecedented growth, building the firm from seven to 26 employees and from 287 to over 4,000 clients. Clients span the state of California, but the majority are located or have branches primarily in Los Angeles and Ventura counties. Gabler serves as an employment law and human resources expert for over 850 businesses of all sizes and industries, providing legal and business counsel to management and conducting training programs for management and employees. She audits clients' employment practices to ensure strategic compliance with current laws and conducts investigations of employee complaints regarding harassment, discrimination, employee theft or other misconduct.

**KATHERINE HREN**

Partner  
Ballard Rosenberg Golper & Savitt, LLP

Katherine Hren is an expert in the field of labor and employment law, representing employers. One of her greatest career achievements is that she has spent the last two years on the front lines with employers, navigating the myriad of legislation surrounding the COVID-19 pandemic. She has advised business through shut downs, re-opening and everything in between. She worked tirelessly to ensure she was up to date on each new regulation to ensure she was an immediate resource for businesses needed to understand each new requirement or rules impacting the workplace.

What sets Hren apart in her field is her unique ability to truly connect with each client and help steer them in the right direction to achieve their desired goals. She is able to quickly analyze risks associated with personnel transactions and create goal oriented results.

**ANNA LISA KNAFO**

Senior Attorney  
ACTS Law

Anna Lisa Knafo has successfully litigated products liability and negligence cases on behalf of catastrophic injury victims and Plaintiffs' Steering Committees in individual and complex, coordinated litigation against product and auto manufacturers and pharmaceutical companies. She has successfully assisted in obtaining eight-figure results for her clients through settlement, arbitration, and trial.

Among her recent highlights has been her work as part of the legal team that obtained an \$8.245 million jury verdict for Jorge Guzman. The defendants in the case ran, owned, and operated the food truck commissary that housed the food truck that plaintiff Guzman worked on. Guzman had been injured on the job after being put in harm's way due to being assigned a dangerous task and was in a coma for three months and suffered from brain damage, as well as several other serious injuries.

**YVONNE LANG**

Senior Partner  
Pearlman, Brown & Wax, LLP

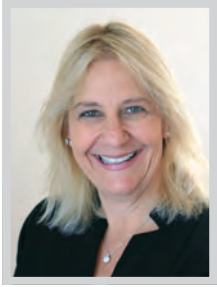
Yvonne Lang is a partner with Pearlman, Brown & Wax, LLP specializing in the defense of workers' compensation claims. She is an experienced trial attorney and has successfully litigated complex issues before the Workers' Compensation Appeals Board.

Lang previously worked as a workers' compensation claims specialist obtaining her self-insurance certificate, WCCP designation and her CPDM. She also worked as a fraud investigator and assisted the National Insurance Crime Bureau and the Los Angeles and Ventura County District Attorneys' offices, with the successful prosecution of doctors in the "What's Up Doc?" sting, as well as the Sycamore Pharmacy prosecution. Lang was also an active member of the California Workers' Compensation Institute's Utilization Review Committee and worked for the implementation of the California Code of Regulations 9792.6(g), Utilization Management and Review. She is an energetic lecturer on topics of interest to insurance companies, third party administrators and employers.



Congratulations to our partner  
**Jessica Bagdanov,**  
on being named to the  
*San Fernando Valley Business Journal's*  
**"Women of Influence: Attorneys."**

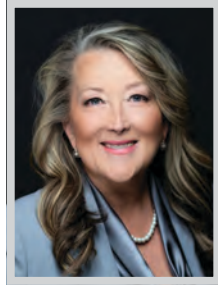
WOMEN OF INFLUENCE: ATTORNEYS



**JANICE L. MILLER**  
*Managing Partner*  
 Miller Haga Law Group, LLP

Janice L. Miller is the managing partner of Miller Haga Law Group, LLP, a premier law firm based in the Los Angeles area that provides Innovative General Counsel Services to both privately-held and Fortune 100 companies. Miller is a highly recognized attorney with more than 25 years of legal experience and represents clients in business transactions, real estate leasing, entertainment, intellectual property, licensing, and hospitality.

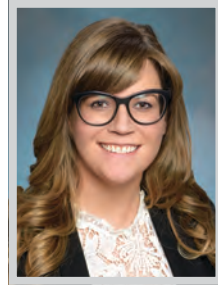
Miller is also an expert in the business strategy of Coopertition and the author of a book on the subject titled 'Coopertition: Cooperation Between Competitors for the Benefit of All.' The book maintains that attorneys and other professionals can enjoy greater success both for themselves and their clients by regarding their competitors as potential collaborators. Miller is a sought-after speaker and panelist at conferences in her practice areas. She has a standout reputation in entertainment, business and real estate law.



**TERRI E. HILLIARD OLSON**  
*Owner and Founder*  
 Terri Hilliard, PC, Estate and Trust Law Firm

Terri Hilliard Olson is an attorney, mediator, Certified Exit Planning Advisor (CEPA), and Certified Alzheimer's Disease and Dementia Care Trainer (CAD-DCT) whose practice centers on advanced estate and business succession and exit planning, asset preservation, special needs trusts and family protection planning for seniors and others. Her firm serves clients from Santa Barbara to San Diego. With offices in Westlake Village, Burbank, Santa Barbara and San Diego, her law practice has grown through referrals and her pillars of success: truth, justice, honor and character.

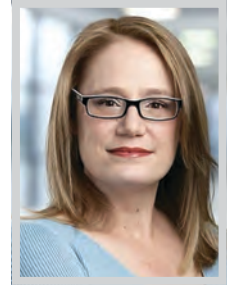
Mediation and advisory service are at the core of Olson's expertise, and as a court-approved mediator, she resolves issues with respect, dignity and a humanistic approach. She is also a skilled public speaker and author of three books on dementia and Alzheimer's for the caregiver and loved ones to help families navigate the legal, financial and psychological maze of the diseases and care options.



**JESSICA ROSEN**  
*Associate*  
 Lewitt Hackman

Jessica Rosen's accomplishments in the legal field range from published opinions in the United States Court of Appeals for the Ninth Circuit to jury verdicts and judgments entered in favor of her business and franchise clients. Her experience encompasses all aspects of civil litigation from pre-filing investigation to case initiation, discovery, pleadings, demurrers, dispositive motions, trials, settlements, briefing appeals and oral argument in federal and state appellate courts.

Rosen has also prepared petitions in the United States Supreme Court. She represents clients in bringing and defending wide-ranging unfair competition, contract and other business disputes, intellectual property matters, franchise disclosure and relationship claims, franchise vicarious liability claims, employment disputes, and claims under federal and California laws. Rosen's recent accomplishments include obtaining a judgment awarding a client several hundred thousand dollars in damages for conversion and defamation.



**LAUREN SCHNEIDER**  
*Managing Partner of the California Offices*  
 Lewis Roca

Lauren Schneider, managing partner of the California offices of Lewis Roca, has extensive experience providing intellectual property protection in the biotechnology and chemistry sectors. She has counseled numerous clients, large and small, and prosecuted patent applications in a wide variety of technical fields, including life sciences, chemistry, materials science, optics, and mechanics. Within these fields, Schneider has particular experience in pharmaceuticals, nutraceuticals, food science, polymer chemistry, battery technology and chemistry, thin film chemistry such as optical films and adhesives, medical devices, OLEDs and OLED chemistry, and optics.

As a leading member of the firm's Biotechnology and Pharmaceutical Industry Group, Schneider provides intellectual property counseling and portfolio development/management to all manner of clients, from large corporations to startup companies to research institutions. Schneider tailors her intellectual property approaches to meet each client's individual needs and protection goals.



**Ballard, Rosenberg, Golper & Savitt  
 congratulates our friend and colleague,  
 Katherine A. Hren, for being honored  
 as one of the Most Influential Women  
 Attorneys for 2022.**

**BALLARD ROSENBERG  
 GOLPER & SAVITT, LLP**

The Law Firm for Employers

[brgslaw.com](http://brgslaw.com) • 818.508.3700

WOMEN OF INFLUENCE: ATTORNEYS



**REENA SEGHAL**  
Principal Attorney  
Seghal Law PC

Reena Seghal has always loved business, creativity, and the arts, and in law school she discovered how to use her skills, education, and passion in a rewarding field. After working alongside, networking, and engaging with industry leaders, she decided to start her own solo practice – Law Offices of Reena Seghal – in 2016. Since then, she has worked with numerous independent filmmakers, artists, and producers on international and domestic films. She also worked and continues to work with individuals and companies in television, live stage, and music.

Seghal, understanding that filmmaking is an expensive proposition, created and developed a first-of-its-kind digital automation and CRM platform for entertainment representatives called “At Your Fingertips.” The platform makes legal documents and packages of documents available to filmmakers at a fraction of the cost of traditional legal services. Her vision has always been to make legal services affordable and easily accessible.



**ANAHID SILAH**  
Partner  
Pearlman, Brown & Wax, LLP

Anahid Nichole Silah is a Partner with Pearlman, Brown & Wax. She specializes in the defense of workers’ compensation, from case inception through trial and appeal, as well as insurance defense. Silah has worked as a litigator representing a variety of commercial and individual clients since 1997.

Silah has a unique interest and background in the handling of complicated medical and medical-legal issues. She also has a current emphasis on the handling of the defense of sports injury claims. Silah and her colleagues have curated a cutting-edge and aggressive approach to litigation defense strategies for each of client’s unique needs. A specialized, client-focused approach allows Silah and her team to pursue both immediate relief and long-term results by proactively envisioning each client’s future based on their current challenges than creating strategic legal solutions for any cross-over lawsuits that may have spawned from the initial case.



**KATHERINE WALLMAN**  
Associate  
Lewitt Hackman

Kate Wallman is a Certified Specialist in Franchise & Distribution Law as designated by the State Bar of California Board of Legal Specialization. Fewer than 50 attorneys are currently designated as a Certified Specialist in Franchise & Distribution Law in the State of California. She is a transactional attorney representing clients in all aspects of registration, ownership, operation, transfers, purchases and sales of franchises – domestically and globally.

Wallman has over 14 years of experience drafting franchise contracts and disclosure documents, as well as advising clients on regulatory compliance. Her practical experience as both in-house franchise counsel to two major restaurant brands and her many years of work in law firm environments give her a unique perspective that she uses to assist her clients with the various issues and demands that franchised and independent business owners face in the expansion, sale, purchase, financing and operation of their companies.



**ANNE WANG**  
Managing Partner  
Lewis Roca

Anne Wang is a partner in Lewis Roca’s Intellectual Property Practice Group and a member of the firm’s Executive Committee. She previously served as managing partner of the firm’s Los Angeles office. Clients rely on Wang for patent prosecution and trademark assistance. With more than 25 years of experience in intellectual property law, she has expertise in building and maintaining patent portfolios in the fields of mechanical, electromechanical, and electrical systems, including computer graphics, optical lasers, musical instruments, apparel, cosmetics, and toys.

Wang’s physics background is especially attractive to medical device clients. Other areas of strength include interferometers, gas sensors and detectors, amusement park rides, and electro-mechanical devices. She has also procured trademark portfolios for a wide variety of clients in the fashion, cosmetics, solar panels and roofing, food, restaurant, and office products industries.

**ESCAPE TO SIMI, WHERE...**  
 infrastructure is new and reliable  
 crime rate is, well, pretty much nonexistent  
 air is clean and traffic is light  
 our workforce is abundant  
 when you get to work, you’re wearing  
 a big “cat-that-ate-the-canary” grin and  
**the city government is always on your side**



For more info, contact Linda Swan at  
(805) 583-6701 or [simibiz@simivalley.org](mailto:simibiz@simivalley.org)  
[simivalley.org](http://simivalley.org)



**SINGER SEWING BUILDING**  
An Historic Live-Work Loft Renovation in DTLA

Parker Brown recently completed a major renovation of a historic building in the heart of old Downtown Los Angeles into live/work lofts. We renovated six lovely brick-walled floors turning them into work-live units. Our economy and workforce is changing. We are ready to help you build for those changes.